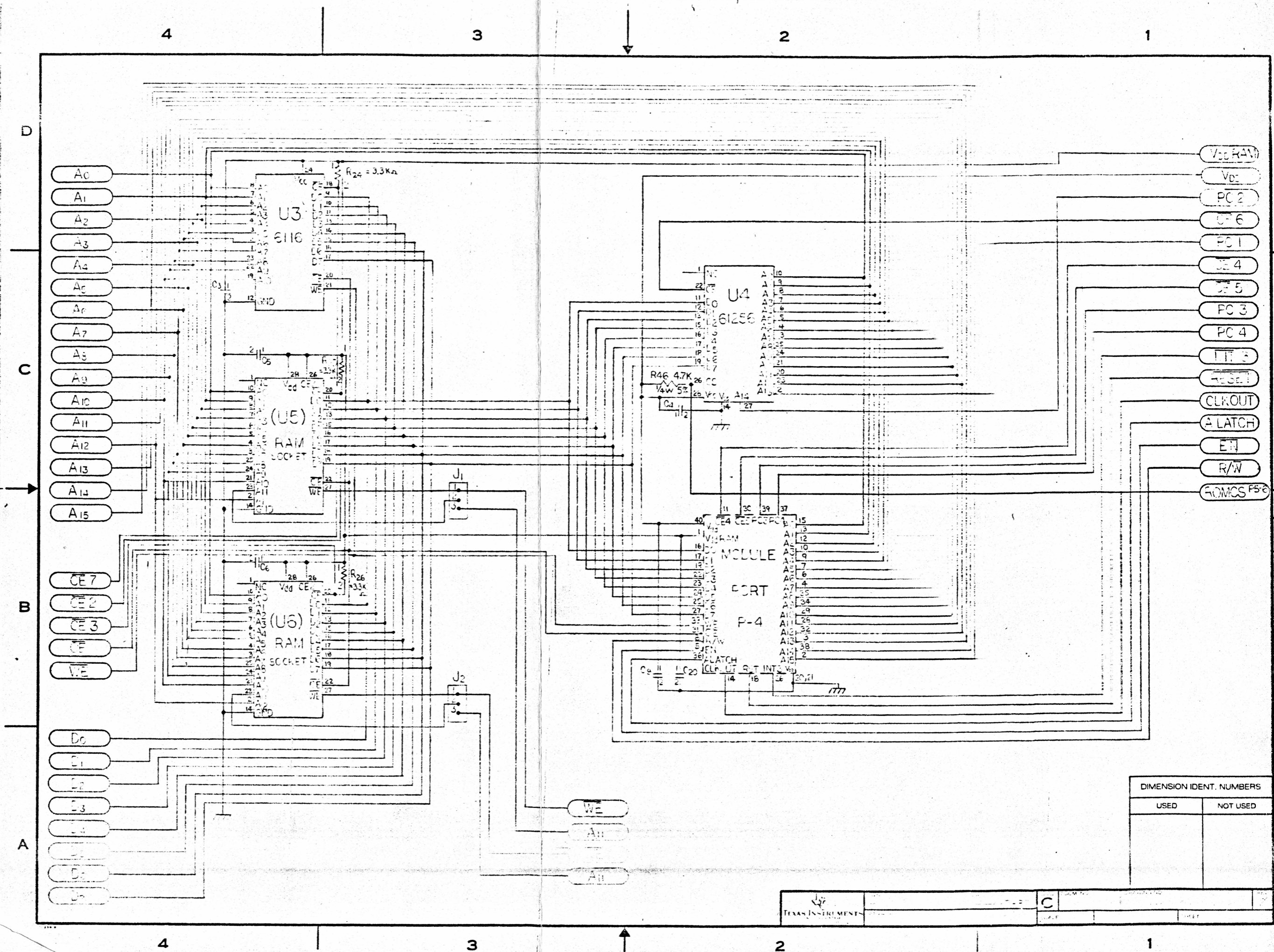


TEXAS INSTRUMENTS

DIMENSION
USED

C



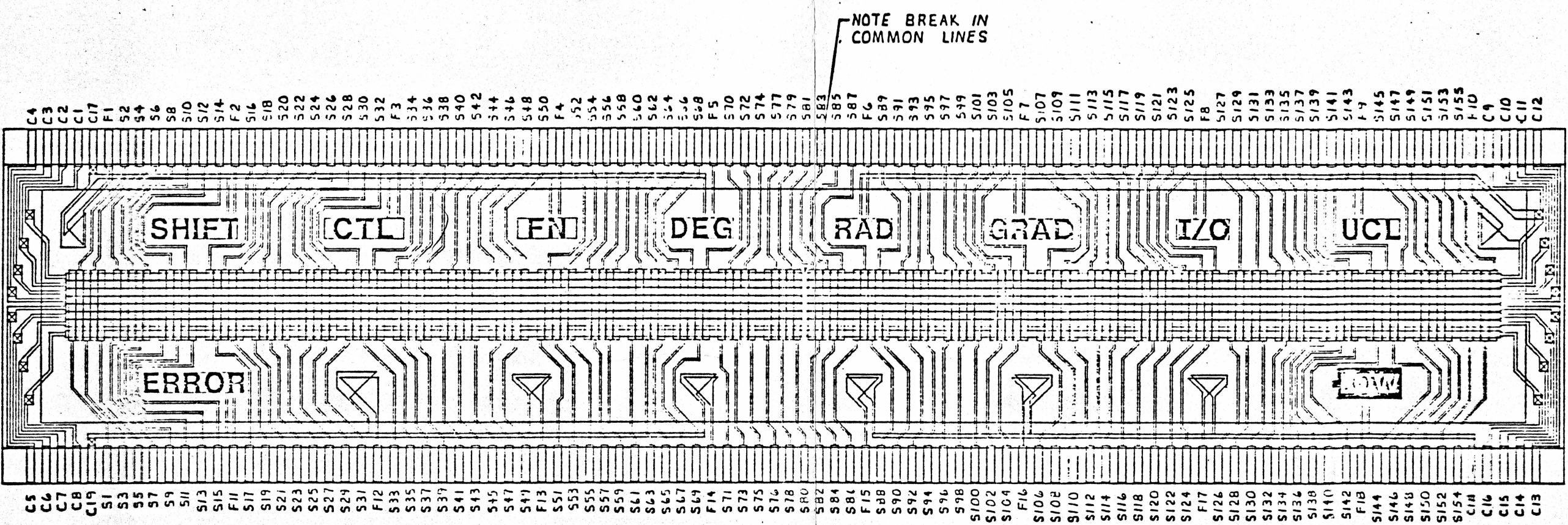
DIMENSION IDENT. NUMBERS

USED	NOT USED

8 7 6 5 4 3 2 1

1044479

D
C
B
A



C4
C3
C2
C1
C17
F1
S2
S4
S6
S8
S10
S12
S14
F2
S16
S18
S20
S22
S24
S26
S28
S30
S32
F3
S34
S36
S38
S40
S42
S44
S46
S48
S50
F4
S52
S54
S56
S58
S60
S62
S64
S66
S68
F5
S70
S72
S74
S76
S78
S80
S82
S84
S86
F6
S88
S90
S92
S94
S96
S98
S100
S102
S104
F7
S106
S108
S110
S112
S114
S116
S118
S120
S122
S124
F8
S126
S128
S130
S132
S134
S136
S138
S140
S142
S144
S146
S148
S150
S152
S154
F9
C9
C10
C11
C12

C5
C6
C7
C8
C19
S1
S3
S5
S7
S9
S11
S13
S15
F11
S17
S19
S21
S23
S25
S27
S29
S31
F12
S33
S35
S37
S39
S41
S43
S45
S47
S49
F13
S51
S53
S55
S57
S59
S61
S63
S65
S67
S69
F14
S71
S73
S75
S77
S79
S81
S83
S85
S87
F15
S89
S91
S93
S95
S97
S99
S101
S103
S105
F16
S107
S109
S111
S113
S115
S117
S119
S121
S123
S125
F17
S127
S129
S131
S133
S135
S137
S139
S141
S143
F18
S145
S147
S149
S151
S153
S155
F19
C9
C10
C11
C12

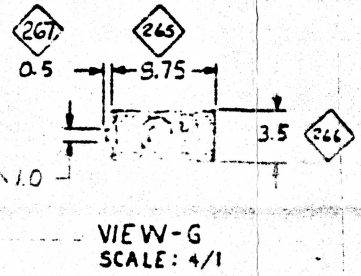
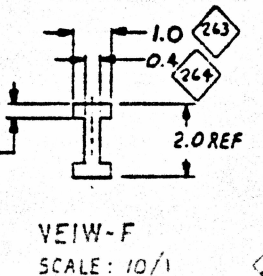
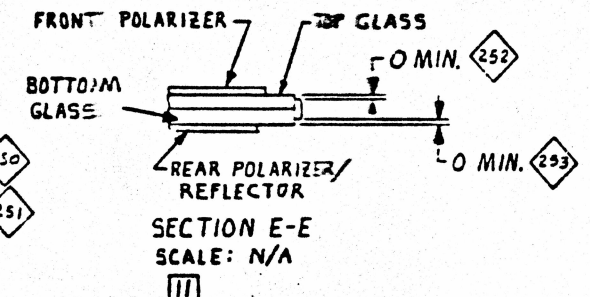
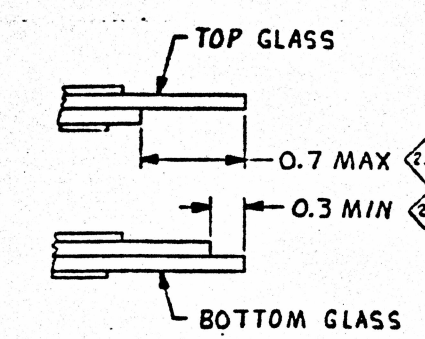
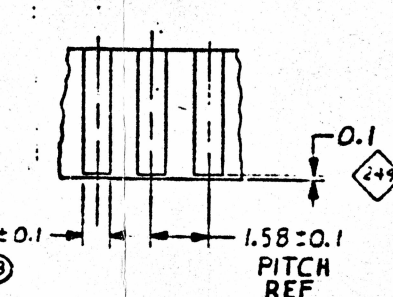
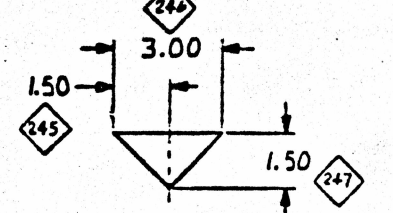
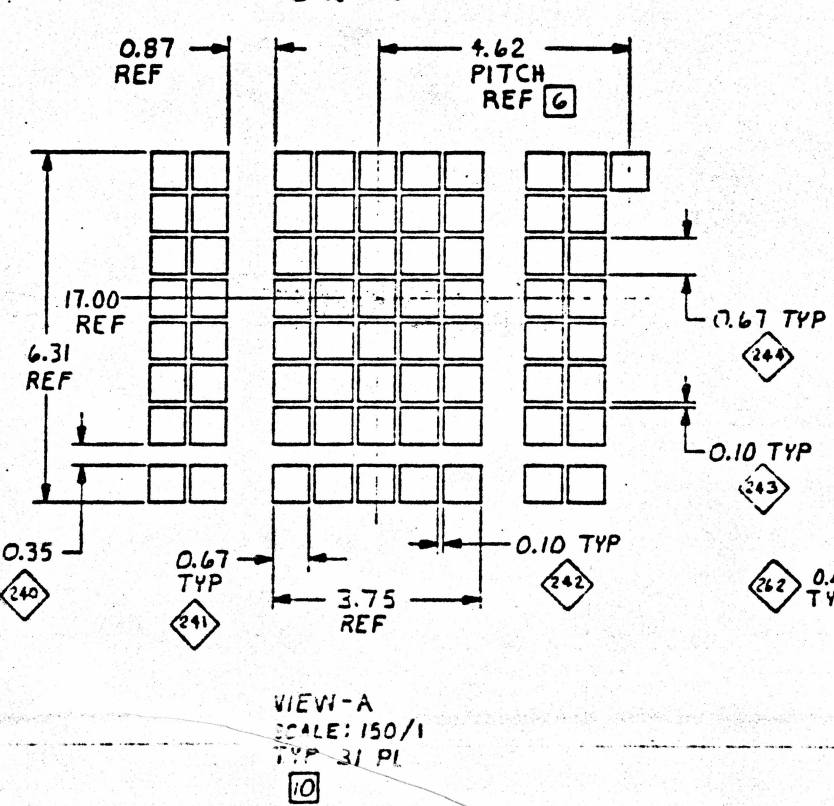
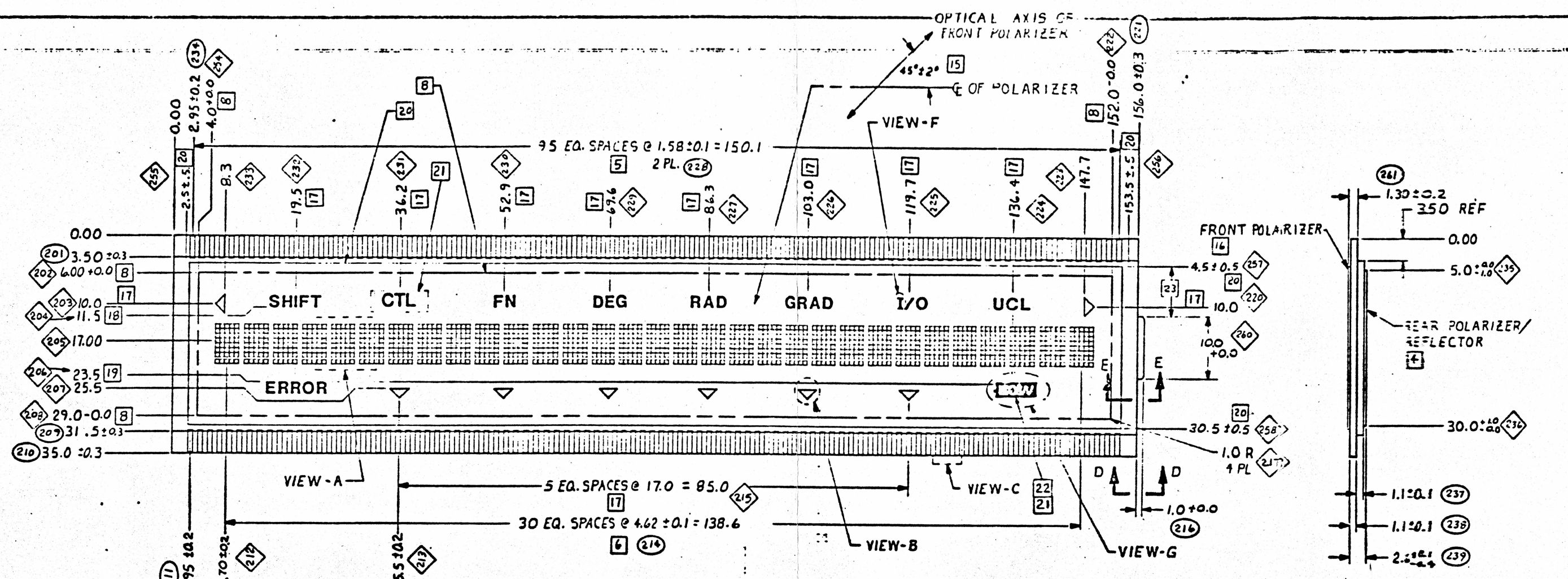
ELECTRICAL INTERCONNECT

☒ - FRONT TO BACK PATTERN ELECTRICAL CROSSOVER
 NOTE: DRAWING SHOWS INTERCONNECT ONLY.
 VENDOR TO DESIGN AND SUPPLY ALL ARTWORK.

8 7 6 5 4 3 2 1

 TEXAS INSTRUMENTS DALLAS, TEXAS	1044479 SCALE 4/11 SHEET 3	DIMENSION IDENT NUMBER
		USED NOT USED

8 7 6 5 4 3 2 1



DIMENSION IDENTIFIERS	
USED	NOT USED
201-259	218, 219, 257
260-266	
267, 268	

8 7 6 5 4 3 2 1

NOTES UNLESS OTHERWISE SPECIFIED:

1. DIMENSIONS ARE IN MILLIMETERS.
2. NUMBERS IN ○ AND ◇ SHALL BE USED FOR DIMENSION IDENTIFICATION (SEE CHART ON EACH SHEET)
3. PART NUMBER, REVISION LETTER, VENDOR ID MARK, DATE CODE AND COUNTRY OF MANUFACTURE TO BE MARKED ON REFLECTOR PER TI DRAWING 1044478.
4. REAR POLARIZER AND REFLECTOR MUST COVER THE ENTIRE AREA INSIDE THE PERIMETER SEAL. REFLECTOR TO BE NON-CONDUCTIVE WHEN IN CONTACT WITH A RIGID PCB. (SHT 2)
5. TOLERANCE NON-ACCUMULATIVE. DIMENSIONS ARE TO CENTERLINE OF PADS. (SHT 2)
6. TOLERANCE NON-ACCUMULATIVE. DIMENSIONS ARE TO CENTERLINE OF CHARACTERS. (SHT 2)
7. TOP GLASS MAY OVERHANG BY 0.7 OR UNDERHANG BOTTOM GLASS BY 0.3. (SEE VIEW D-D) (SHT 2)
8. MINIMUM VIEWING AREA. (SHT 2)
9. ARTWORK TO BE SUPPLIED BY VENDOR MUST BE APPROVED BY TEXAS INSTRUMENTS.
10. SEE PARAGRAPH 3.5.9 OF TI DRAWING 1044478 FOR SEGMENT TOLERANCES. (SHT 2)
11. FILL HOLE SEAL MAY NOT EXTEND BEYOND THE FRONT SURFACE OF THE TOP GLASS NOR THE REAR SURFACE OF THE BOTTOM GLASS. (SEE SECTION E-E) (SHT 2)
12. SEE TI DRAWING 1044478 FOR GENERAL SPECIFICATIONS.
13. SEE TI DRAWING 1034551 FOR ENVIRONMENTAL REQUIREMENTS.
14. DO NOT SCALE THIS DRAWING.
15. FRONT POLARIZER OPTICAL AXIS. DISPLAY TO EXHIBIT DARK CHARACTERS ON A LIGHT BACKGROUND. (SHT 2)
16. POLARIZER TO BE FURNISHED BY THE VENDOR MUST BE NEUTRAL IN COLOR AND ATTACHED SECURELY TO THE FRONT SURFACE OF THE CELL. ALLOWABLE DEFECTS ARE DESCRIBED IN TI DRAWING NO. 1044478. POLARIZER MUST BE APPROVED BY TEXAS INSTRUMENTS PRIOR TO PRODUCTION.
17. DIMENSION TO CENTERLINE OF FLAG (10) PLACES. (SHT 2)
18. DIMENSION TO BOTTOM OF FLAG (8) PLACES. (SHT 2)
19. DIMENSION TO TOP OF FLAG (2) PLACES. (SHT 2)
20. FRONT POLARIZER OUTLINE DIMENSIONS. (SHT 2)
21. CHARACTER FONT TO BE 2.0 MM HIGH HELVETICA MEDIUM. (SHT 2)
22. CHARACTERS ARE LIGHT ON DARK BACKGROUND. NO VISIBLE INTERCONNECT LINES ALLOWED. (SHT 2)
23. VENDOR OPTION. (SHT 2)
24. PACKAGING SHALL CONFORM TO TEXAS INSTRUMENTS SPECIFICATION 1070765, PACKAGING TYPE 7 & TYPE 1.

REV	DESCRIPTION	DATE	APP'D	BY
A	NO ECN 9-8-81 <i>Chad...</i> SHT 2 & 3 WERE REDRAWN PER EXTENSIVE ENGINEERING CHANGES	11/15/81		C <i>...</i>
B	NO ECN 12-15-81 <i>Chad...</i> REVISE SHT 1 & CHANGE NOTES ON SHT 2.	12/15/81		C <i>...</i>
C	NO ECN 1-27-82 <i>Chad...</i> SHT 1 ADDED NOTE 23. SHT 2. LOOSEN TOL TO DIMS 201 209 211, 212, 213, 239, 239, 255, 256, 257 & 258 & DELETED DIMS 218, 219 & 259. ADDED DIMS 260 THRU 267. SHT 3 WAS REDRAWN	1/27/82		C <i>...</i>
D	NO ECN 3-10-82 J.P. <i>...</i> SHT 1 - ADDED NOTE 24 & REVISED PL SHT 2 - ADDED DIM IDENTIFIERS 267 & 268	3/10/82		C <i>...</i>
E	NO ECN 5-12-82 C.G. <i>...</i> REVISE SHT-3.	5/12/82		C <i>...</i>

ITEM NO.	PART NUMBER	DESCRIPTION	MATERIAL	REMARKS
3	1044479-0201	DISPLAY WITH FRONT POLARIZER		
2	1044479-0101	DISPLAY BUT NO FRONT POLARIZER		NO FRONT POLARIZER
1	1044479-01XX	BASIC PART CONFIGURATION		

DIMENSION IDENT	ALLOWED	NOT ALLOWED

1044479	477
NEXT ASSY	USED ON
APPLICATION	

1044479	1/16 DUTY CYCLE
D	1044479
REVISED	REVISED

